

Environmental Research Letters



CORRIGENDUM

Corrigendum: Impacts devalue the potential of large-scale terrestrial CO<sub>2</sub> removal through biomass plantations (2016 *Environ. Res. Lett.* **9** 095010)

OPEN ACCESS

RECEIVED  
14 November 2016

ACCEPTED FOR PUBLICATION  
29 November 2016

PUBLISHED  
9 December 2016

Original content from this work may be used under the terms of the [Creative Commons Attribution 3.0 licence](#).

Any further distribution of this work must maintain attribution to the author(s) and the title of the work, journal citation and DOI.



L R Boysen<sup>1,2,3</sup>, W Lucht<sup>1,2,3</sup>, D Gerten<sup>1,2</sup> and V Heck<sup>1,2</sup>

<sup>1</sup> Potsdam Institute for Climate Impact Research, Telegraphenberg A62, 14473 Potsdam, Germany

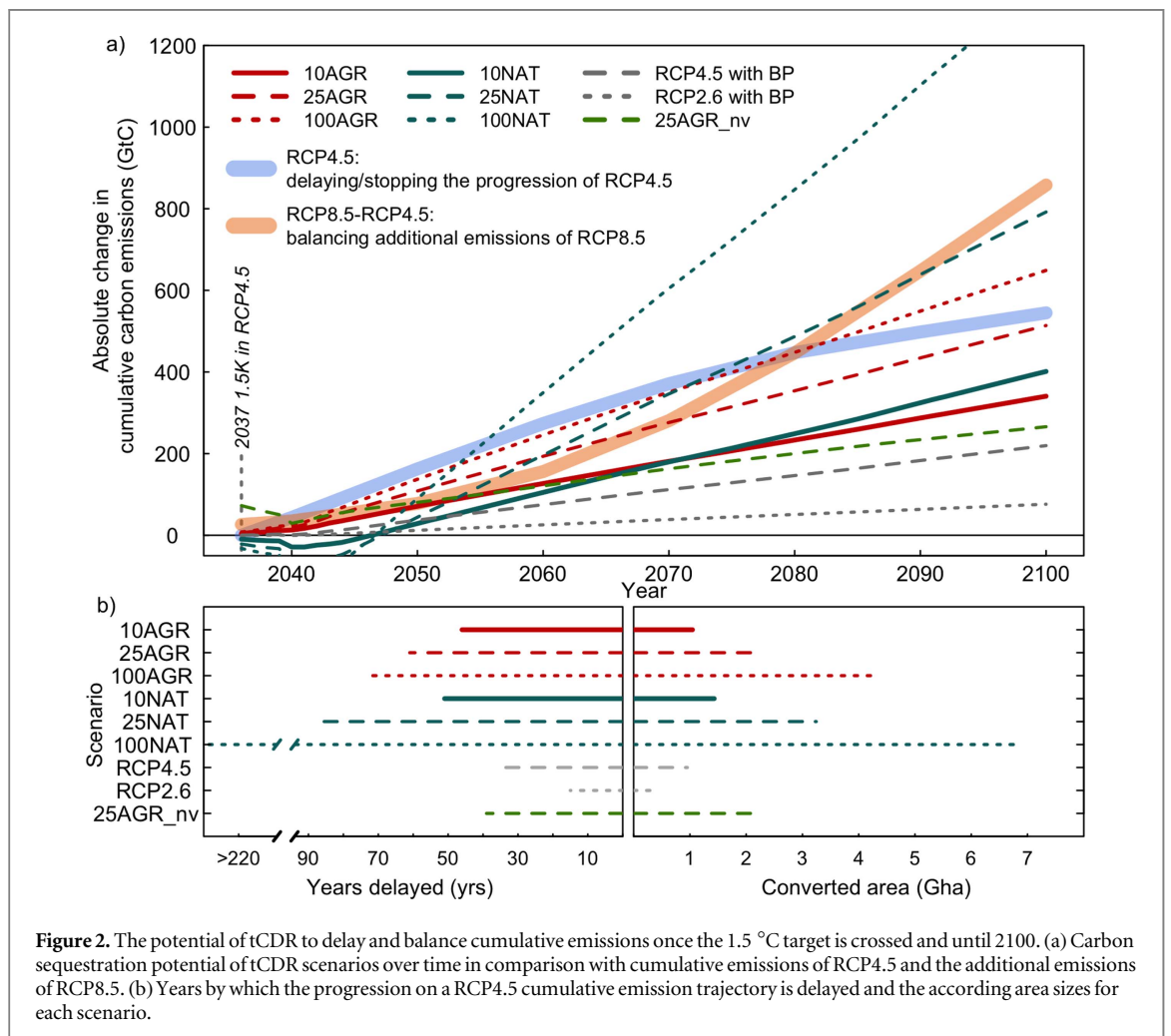
<sup>2</sup> Humboldt-Universität zu Berlin, Department of Geography, Unter den Linden 6, 10099 Berlin, Germany

<sup>3</sup> Integrative Research Institute on Transformations of Human-Environment Systems, Unter den Linden 6, 10099 Berlin, Germany

E-mail: [lboysen@pik-potsdam.de](mailto:lboysen@pik-potsdam.de)

Due to a technical error in finalizing the manuscript (Boysen *et al* 2015 *Environ. Res. Lett.* **9** 095010), the left-hand side of panel b of figure 2 does not depict the correct data values. The correct figure is as given here. The error is one of depiction

only: Numbers stated and discussed in the text are correct throughout and table 2 contains the correct numbers. We regret the error in the production of the figure and apologize to readers for inconvenience this may have caused.



**Figure 2.** The potential of tCDR to delay and balance cumulative emissions once the 1.5 °C target is crossed and until 2100. (a) Carbon sequestration potential of tCDR scenarios over time in comparison with cumulative emissions of RCP4.5 and the additional emissions of RCP8.5. (b) Years by which the progression on a RCP4.5 cumulative emission trajectory is delayed and the according area sizes for each scenario.